



Perfect
EQUIPMENT



WHEEL WEIGHT
PRODUCT CATALOG



Since 1939

Since 1939, Perfect Equipment® has been a leader in wheel weight innovation and quality. Recognized as a brand synonymous with quality, service and fit, Perfect Equipment offers a comprehensive range of wheel balancing weights. Our global wheel weight platform supplies both OEM and aftermarket customers on five continents and we remain the only manufacturer that can provide a complete wheel weight program in three different materials: lead, zinc and steel.

With an unwavering commitment to quality and service we are proud to serve our customers as the most experienced wheel weight manufacturer in the industry. We thank you for your continued business and for recognizing us as the industry's only "one-source" supplier.

Perfect Balance

All wheel weights are not created equal. Today's vehicles weigh less and are designed with sophisticated suspension systems making an accurate balance increasingly important. Perfect Equipment® is committed to providing products that fulfill our customer's complete wheel balancing weight needs. As the only manufacturer with a complete wheel weight program in three materials, we recognize that the use of "universal" weights may not produce the best fit, leading to additional challenges for our customers. This includes increased costs, increased man-hours due to rebalancing and the risk of decreased customer satisfaction. We are dedicated to helping our customers better serve theirs.

Quality Assurance

Perfect Equipment® has received numerous quality awards, including Ford Q1, Nissan's Zero Defect Award and Toyota's Quality Achievement. Our ISO 14001 and ISO/TS 16949 certifications hold us to the highest environmental and quality standards in the business.



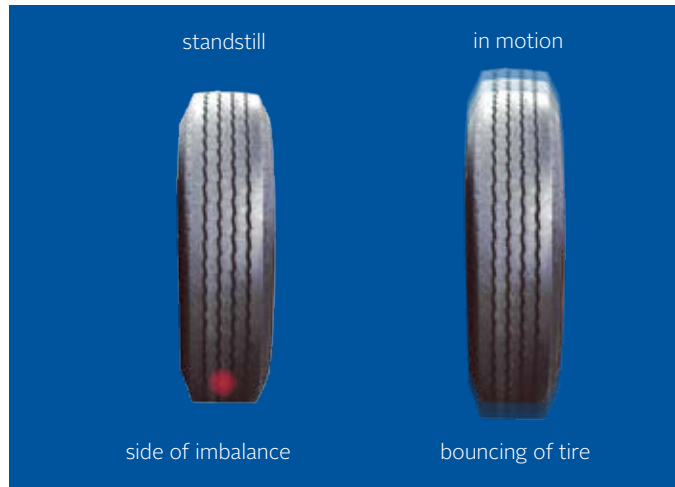
Table of Contents

What is imbalance?				4
Tips & Benefits				5
Non-lead transition				6
The difference between zinc & steel				7
Clip-on wheel weights	passenger car & light truck	Zinc	8-11	
		Steel	12-14	
		Lead	15-17	
	medium & heavy duty truck	Zinc	18-19	
		Lead	20-21	
Adhesive wheel weights	passenger car & motorcycle	Steel	22-24	
		Lead	25	
	medium & heavy duty truck	Steel	26-27	
		Lead	29-29	
Assortments		Zinc	30-31	
		Steel	32	
		Lead	33	
Accessories & Tools				34-39

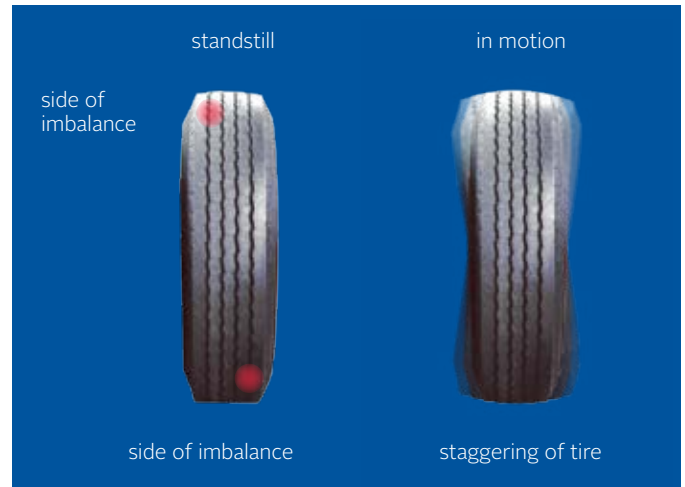
What is imbalance?

Today's tire and wheel combinations feature two types of imbalances, static imbalance and dynamic imbalance. Static imbalance is caused by a difference of weight over the whole plane of the wheel. Dynamic imbalance means a difference of weight outside the plane of the wheel. In order to reach a perfect balance, both imbalances must be corrected.

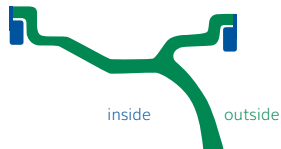
Static imbalance



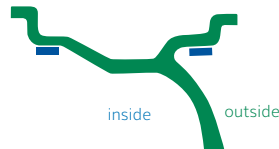
Dynamic imbalance



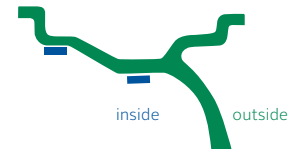
6 different methods of balancing passenger car rims



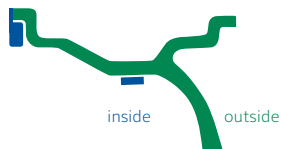
1. Balancing using clip-on weights for both planes. This method requires the least mass for balancing. This method is applied by most of the automobile manufactures.



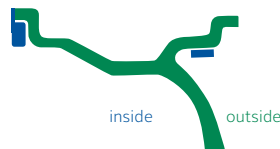
2. Balancing using adhesive weights for both planes. The weights are applied to the interior and exterior side in the outermost positions.



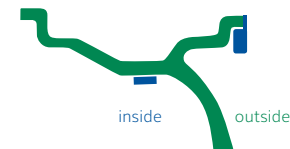
3. Both adhesive weights are applied to the interior side in the rim navel.



4. The exterior balance plane is transferred to the inside and the adhesive weight is applied to the rim navel within the brake disc area. A clip-on weight with integral or separate clips is applied to the inner rim flange.



5. An adhesive weight is used on the outer rim. It is applied to the outermost position. A clip-on weight with integral or separate clip is applied to the inner rim flange.



6. A clip-on weight with integral or separate clip is applied to the outer rim flange. An adhesive weight is used on the inner rim. The weight is applied to the outermost position in the rim navel.

Tips & Benefits



Rotating & Balancing: A Selling Opportunity

Rotating and balancing your customers' tires represents a tremendous opportunity for your shop. Rotating and balancing is a service that is often overlooked by the customer and the shop. It is part of a regular maintenance routine and an opportunity for your shop to sell another service.

Rotating & Balancing:

- Is an undersold service.
- Is an opportunity to sell an additional service.
- Provides increased satisfaction to your customers.
- Is simple to perform and easy to implement as an additional service.
- Can add significantly to your shop's profits.

Tire Rotation Every 6,000? Positively!

Regular Tire Rotation Promotes:

- Reduced maintenance costs.
- Even tread wear.
- Prolonged tread life.
- Improved handling and braking.

Routine tire rotation promotes even tread wear. This makes tires last longer, which saves money. Also, vehicles with even tread wear have better traction, which increases handling and reduces braking distances. This ensures a safer ride, especially on wet and slick roads.



Smooth, Comfortable Ride? Only with balanced tires!

Balancing tires:

- Improves a vehicle's ride.
- Saves money on tires.
- Is recommended by most car companies.
- Improves handling and braking.

Today's vehicles are much more sensitive to vibration than the vehicles of the past. They weigh 25% less than the vehicles 10 years ago, and although this helps fuel economy, it makes these vehicles more sensitive to wheel imbalance. Routine tire balancing improves a vehicle's ride and reduces vibration by correcting tire imbalance. It also helps to keep the tire in contact with the road, which improves traction, which helps handling and braking.

Tire Rotation & Inspection

Tires should be inspected or rotated on a regular basis. Most manufacturers recommend inspecting and rotating tires every 6,000 to 8,000 miles. This promotes uniform wear for all tires, which improves ride, handling, and fuel economy.

Be sure to check both the vehicle's manual and the tire manufacturer's recommendations for rotation patterns. Some tires are unidirectional and can only be rotated front to back.

After rotation, check for proper inflation and check the owner's manual for proper wheel nut torque values.

Mastering the Non-Lead Transition



Eliminate the Complexity by Staying Informed

If your organization is like so many others today, then you're hearing a lot about the transition away from lead wheel weights. Many of our customers have already felt the pressure of legislation being passed mandating a switch to non-lead alternatives.

Japan has been voluntarily phasing out lead wheel weights since 2001. Following that, the use of lead in wheel weights was banned completely in Europe in 2003. Those changes prompted OE manufacturers in North America to begin transitioning to viable non-lead materials including zinc and steel, with over half making the switch voluntarily.

Today, several states have either passed or have pending legislation that calls for a ban of lead wheel weights. The US Environmental Protection Agency (EPA) is actively pursuing rulemaking that would ban lead wheel weights at the federal level. Zinc weights, and coated steel weights, are both legal alternatives to traditional lead weights.

Perfect Equipment continues to remain active with Legislative and environmental experts to stay up-to-date on the most current information available. We are dedicated to keeping you informed of changes that affect your business and providing you assistance with your transition from start to finish. With a complete wheel weight program in both zinc, and steel, we offer customers a choice when switching to a non-lead alternative. We have provided industry-leading products for over 70 years and will continue to do so as the industry makes the transition together. Make the perfect choice. Choose Perfect Equipment.

The difference between Zinc & Steel

Perfect Equipment offers two alternatives to conventional lead wheel weights; zinc and steel. Both product lines are available with the same durable Wheel Protectors® coating that has been the industry standard for decades. With over 2 billion parts used in the past five years, zinc remains the material of choice for wheel balance weights for most OE manufacturers. The US Department of Ecology has recognized zinc as a viable alternative to replace lead wheel weights. Zinc is one of the most common elements on the earth's crust, is present in all foods, and is required for a healthy immune system. Steel weights continue to be a popular choice among several North American and Japanese OE manufacturers. Perfect Equipment steel weights have a patented clip-to-body engagement that ensures a solid attachment.

ZINC



- Easy to install
- Closest to lead functionality and fit
- Superior corrosion resistance
- Softer than steel (reducing scratching)
- Preferred appearance to steel

With over 2 billion parts used in the past five years, zinc remains the material of choice for most OE manufacturers. The US Department of Ecology has recognized zinc as viable alternative to replace lead wheel weights. Zinc is one of the most common elements on the earth's crust, is present in all foods, and is required for a healthy immune system.

STEEL



- Provides best steel retention in the industry
- Patented clip-to-body engagement
- Superior corrosion resistance
- Better cosmetic appearance than other steel products on the market

Steel weights continue to be a popular choice among several North American and Japanese OE manufacturers. Perfect Equipment steel weights have a patented clip to body engagement that ensures a solid attachment.

Complete Wheel Weight Program Chart

LEAD TYPE	ZINC TYPE	STEEL TYPE
P	PZ	PST
AWN	AWZ	AWST
MCN	MCZ	MCST
LH	LHZ	LHST
IAW	IAWZ	IAWST
EN	ENZ	ENST
FN	FNZ	FNST
TN	TZ	TST
ADHESIVE	ADHESIVE	ADHESIVE

IMBALANCE

NON-LEAD

CLIP-ON

ADHESIVE

ASSORTMENTS

ACCESSORIES



CLIP-ON

Passenger car & light truck



■ PZU-Series

Wheel Weights for Steel Wheels

The PZU-Series zinc clip-on wheel weight is used on standard passenger car 13"-17" steel wheels. Also available in a coated finish (PZ-Series). Please refer to Application Guide (Part # 18082NL) and use rim gauge (RGP1) to verify specific applications.

Sizes 0.25 oz. - 3 oz.



■ AWZ-Series

Wheel Protectors®
Coated Wheel Weights for Alloy Wheels

The AWZ-Series zinc clip-on wheel weight is used on most domestic vehicles equipped with alloy rims that were manufactured prior to 1995. Please refer to Application Guide (Part # 18082NL) and use rim gauge (RGP1) to verify specific applications.

Sizes: 0.25 oz. - 3 oz.

MAKE	MODEL	YEAR
Acura	All	1989-1995
Buick	Most	1980-1992
Chevrolet	Most	1980-1995
Chrysler	Most	1980-1989
Dodge	Most	1980-1989
Infiniti	All	1990-1995
Isuzu	All	1980-1995
Lexus	All	1990-1995
Oldsmobile	Most	1980-1995
Pontiac	Most	1980-1995



■ MCZ-SERIES

Wheel Protectors®
Coated Wheel Weights for Alloy Wheels

The MCZ-Series zinc clip-on wheel weight is used on most domestic vehicles equipped with alloy rims. Please refer to Application Guide (Part # 18082NL) and use rim gauge (RGP1) to verify specific applications.

Sizes: 0.25 oz. - 3 oz.

MAKE	MODEL	YEAR
Buick	Most	1992-2005
Chevrolet	Most	1995-2011
Chrysler	Most	1990-2008
Dodge	Most	1990-2004
Ford	All	1980-2011
Mazda	Most	1983-2005
Oldsmobile	Most	1996-2005
Pontiac	Most	1996-2005
Saturn	All	1991-2005

ZINC Clip-on

Passenger car & light truck

LHZ-Series

Wheel Protectors®
Coated Wheel Weights for Alloy Wheels

The LHZ-Series zinc clip-on wheel weight is used primarily on late-model Chrysler cars and is designed to fit their unique wheel flange profile. Please refer to Application Guide (Part # 18082NL) and use rim gauge (RGP1) to verify specific applications.

Sizes: 0.25 oz. – 3 oz.



MAKE	MODEL	YEAR
Chrysler	Concord, LHS	1998-2004
	Town & Country	1998-2004
Dodge	Caravan	1998-2011
	Intrepid	1998-2004
	Neon	2000-2004
Ford	HD F150	2001-2003

IAWZ-Series

Wheel Protectors®
Coated Wheel Weights for Alloy Wheels

The IAWZ-Series zinc clip-on wheel weight is used primarily on most European and certain Asian vehicles equipped with alloy wheels. Please refer to Application Guide (Part # 18082NL) and use rim gauge (RGP1) to verify specific applications.

Sizes: 5g - 60g



MAKE	MODEL	YEAR
Audi	All	1980-1996
BMW	All	1980-2005
Cadillac	Catera	1997-2001
Jaguar	All	1988-2011
Kia	All	1994-2011
Nissan	All	1979-1989
Toyota	All	1980-1989
Volkswagen	All	1980-1996
Volvo	All	1980-2011

ENZ-Series

Wheel Protectors®
Coated Wheel Weights for Alloy Wheels

The ENZ-Series zinc clip-on wheel weight is used primarily on Audi, Mercedes Benz and early-model Japanese vehicles equipped with alloy wheels. Please refer to Application Guide (Part # 18082NL) and use rim gauge (RGP1) to verify specific applications.

Sizes: 10g - 60g



MAKE	MODEL	YEAR
Acura	All	1980-1996
Audi	All	1997-2011
Ford Truck	Explorer Ranger	2001-2004
Honda	All	1980-1988
Mercedes Benz	All	1976-2011
Volkswagen	All	1980-1996



MAKE	MODEL	YEAR
Acura	All	1989-2011
Honda	All	1989-2011
Infiniti	All	1990-2011
Lexus	All	1990-2011
Nissan	All	1990-2011
Toyota	All	1990-2011

FNZ-Series

Wheel Protectors®
Coated Wheel Weights for Alloy Wheels

The FNZ-Series zinc clip-on wheel weight is used primarily on most Japanese vehicles equipped with alloy wheels that were manufactured prior to 1990. Please refer to Application Guide (Part # 18082NL) and use rim gauge (RGP1) to verify specific applications.

Sizes: 5g – 60g



MAKE	MODEL	YEAR
Cadillac	Escalade	2001
Chevrolet	All Full Size with Steel Wheels	1988-2011
	All Full Size with Alloy Wheels	1999-2011
Dodge	All Full Size with Steel Wheels	1993-2011
Ford	All	1980-2011
GMC	All Full Size with Steel Wheels	1988-2011
	All Full Size with Alloy Wheels	1999-2011
Lincoln	Navigator	1998-2002

TZ-Series

Wheel Protectors®
Coated Wheel Weights for Alloy Wheels

The TZ-Series zinc clip-on wheel weight is used primarily on most domestic light trucks equipped with decorative and larger-thickness steel wheels and most late-model light-trucks equipped with alloy wheels. Please refer to Application Guide (Part # 18082NL) and use rim gauge (RGP1) to verify specific applications.

Sizes: 0.25 oz. – 3 oz.

Clip-On wheel weight installation instructions



1. Select the correct application

Using a wheel weight application guide, select the correct application for the vehicle you are servicing. Check that the weight application is correct by testing the placement on the wheel flange.



2. Placing the wheel weight

Place the wheel weight in the correct location of the imbalance. Prior to striking with the hammer, make sure that the top and the bottom of the clip are touching the rim flange. The body of the weight should not be touching the rim!



3. Installation

Once the wheel weight is properly aligned, strike the clip with a proper wheel weight installation hammer. Please note: striking the weight body could result in clip retention failure or weight movement.



4. Checking the weight

After installing the weight, check to make sure that it is secured properly.

STEEL Clip-on

Passenger car & light truck

■ PST-Series

Wheel Weight for Steel Wheels

The PST-Series steel clip-on wheel weight is used on standard passenger car 13"-17" steel wheels. Please refer to Application Guide (Part # 18082NL) and use rim gauge (RGP1) to verify specific applications.

Sizes: 0.25 oz. – 3 oz.

■ AWST-Series

Wheel Protectors®
Coated Wheel Weights for Alloy Wheels

The AWST-Series steel clip-on wheel weight is used on most domestic vehicles equipped with alloy rims that were manufactured prior to 1995. Please refer to Application Guide (Part # 18082NL) and use rim gauge (RGP1) to verify specific applications.

Sizes: 0.25 oz. – 3 oz.

■ MCST-Series

Wheel Protectors®
Coated Wheel Weights for Alloy Wheels

The MCST-Series steel clip-on wheel weight is used on most domestic vehicles equipped with alloy rims. Please refer to Application Guide (Part # 18082NL) and use rim gauge (RGP1) to verify specific applications.

Sizes: 0.25 oz. – 3 oz.



MAKE	MODEL	YEAR
Acura	All	1989-1995
Buick	Most	1980-1992
Chevrolet	Most	1980-1995
Chrysler	Most	1980-1989
Dodge	Most	1980-1989
Infiniti	All	1990-1995
Isuzu	All	1980-1995
Lexus	All	1990-1995
Oldsmobile	Most	1980-1995
Pontiac	Most	1980-1995



MAKE	MODEL	YEAR
Buick	Most	1992-2005
Chevrolet	Most	1995-2011
Chrysler	Most	1990-2008
DODGE	Most	1990-2004
FORD	All	1980-2011
Mazda	Most	1983-2005
Oldsmobile	Most	1996-2005
Pontiac	Most	1996-2005
Saturn	All	1991-2005



MAKE	MODEL	YEAR
Chrysler	Concord, LHS	1998-2004
	Town & Country	1998-2004
Dodge	Caravan	1998-2011
	Intrepid	1998-2004
	Neon	2000-2004
Ford	HD F150	2001-2003



MAKE	MODEL	YEAR
Audi	All	1980-1996
BMW	All	1980-2005
Cadillac	Catera	1997-2001
Jaguar	All	1988-2011
Kia	All	1994-2011
Nissan	All	1979-1989
Toyota	All	1980-1989
Volkswagen	All	1980-1996
Volvo	All	1980-2011



MAKE	MODEL	YEAR
Acura	All	1980-1996
Audi	All	1997-2011
Ford Truck	Explorer	2001-2004
	Ranger	
Honda	All	1980-1988
Mercedes Benz	All	1976-2011
Volkswagen	All	1980-1996

LHST-Series

Wheel Protectors®
Coated Wheel Weights for Alloy Wheels

The LHST-Series steel clip-on wheel weight is used primarily on late-model Chrysler cars and is designed to fit their unique wheel flange profile. Please refer to Application Guide (Part # 18082NL) and use rim gauge (RGP1) to verify specific applications.

Sizes: 0.25 oz. – 3 oz.

IAWST-Series

Wheel Protectors®
Coated Wheel Weights for Alloy Wheels

The IAWST-Series steel clip-on wheel weight is used primarily on most European and certain Asian vehicles equipped with alloy wheels. Please refer to Application Guide (Part # 18082NL) and use rim gauge (RGP1) to verify specific applications.

Sizes: 10g – 60g

ENST-Series

Wheel Protectors®
Coated Wheel Weights for Alloy Wheels

The ENST-Series steel clip-on wheel weight is used primarily on Audi, Mercedes Benz and early-model Japanese vehicles equipped with alloy wheels. Please refer to Application Guide (Part # 18082NL) and use rim gauge (RGP1) to verify specific applications.

Sizes: 10g – 60g

FNST-Series

Wheel Protectors®
Coated Wheel Weights for Alloy Wheels

The FNST-Series steel clip-on wheel weight is used primarily on most Japanese vehicles equipped with alloy wheels that were manufactured prior to 1990. Please refer to Application Guide (Part # 18082NL) and use rim gauge (RGP1) to verify specific applications.

Sizes: 5g – 60g



MAKE	MODEL	YEAR
Acura	All	1989-2011
Honda	All	1989-2011
Infiniti	All	1990-2011
Lexus	All	1990-2011
Nissan	All	1990-2011
Toyota	All	1990-2011

TST-Series

Wheel Protectors®
Coated Wheel Weights for Alloy Wheels

The TST-Series steel clip-on wheel weight is used primarily on most domestic light trucks equipped with decorative and larger-thickness steel wheels and most late-model light-trucks equipped with alloy wheels. Please refer to Application Guide (Part # 18082NL) and use rim gauge (RGP1) to verify specific applications.

Sizes: 0.25 oz. – 3 oz.



MAKE	MODEL	YEAR
Cadillac	Escalade	2001
Chevrolet	All Full Size with Steel Wheels	1988-2011
	All Full Size with Alloy Wheels	1999-2011
Dodge	All Full Size with Steel Wheels	1993-2011
Ford	All	1980-2011
GMC	All Full Size with Steel Wheels	1988-2011
	All Full Size with Alloy Wheels	1999-2011
Lincoln	Navigator	1998-2002



■ P-Series

Wheel Weights for Steel Wheels

The P-Series lead clip-on wheel weight is used on standard passenger car 13"-17" steel wheels. Also available in coated (PS-Series). Please refer to Application Guide (Part # 18082) and use rim gauge (RGP1) to verify specific applications.

Note: Use our XT-Series clip-on wheel weights for thinner high-strength steel wheels and our TN-Series clip-on wheel weights for late-model, light-trucks with steel wheels.

Sizes: 0.25 oz. – 6 oz.



■ AWN-Series

Wheel Protectors®
Coated Wheel Weights for Alloy Wheels

The AWN-Series lead clip-on wheel weight is used on most domestic vehicles equipped with alloy rims that were manufactured prior to 1995. Also available in an uncoated finish (AW-Series). Please refer to Application Guide (Part # 18082) and use rim gauge (RGP1) to verify specific applications.

Sizes: 0.25 oz. – 3 oz.

MAKE	MODEL	YEAR
Acura	All	1989-1995
Buick	Most	1980-1992
Chevrolet	Most	1980-1995
Chrysler	Most	1980-1989
Dodge	Most	1980-1989
Infiniti	All	1990-1995
Isuzu	All	1980-1995
Lexus	All	1990-1995
Oldsmobile	Most	1980-1995
Pontiac	Most	1980-1995



■ MCN-Series

Wheel Protectors®
Coated Wheel Weights for Alloy Wheels

The MCN-Series lead clip-on wheel weight is used on most domestic vehicles equipped with alloy rims. Also available in an uncoated finish (MC-Series). Please refer to Application Guide (Part # 18082) and use rim gauge (RGP1) to verify specific applications.

Sizes: 0.25 oz. – 4 oz.

MAKE	MODEL	YEAR
Buick	Most	1992-2005
Chevrolet	Most	1995-2011
Chrysler	Most	1990-2008
DODGE	Most	1990-2004
FORD	All	1980-2011
Mazda	Most	1983-2005
Oldsmobile	Most	1996-2005
Pontiac	Most	1996-2005
Saturn	All	1991-2005

LEAD Clip-on

LH-Series

Wheel Protectors®
Coated Wheel Weights for Alloy Wheels

The LH-Series lead clip-on wheel weight is used primarily on late-model Chrysler cars and is designed to fit their unique wheel flange profile. Please refer to Application Guide (Part # 18082) and use rim gauge (RGP1) to verify specific applications.

Sizes: 0.25 oz. – 3 oz.

IAW-Series

Wheel Protectors®
Coated Wheel Weights for Alloy Wheels

The IAW-Series lead clip-on wheel weight is used primarily on most European and certain Asian vehicles equipped with alloy wheels. Please refer to Application Guide (Part # 18082) and use rim gauge (RGP1) to verify specific applications.

Sizes: 5g – 60g

EN-Series

Wheel Protectors®
Coated Wheel Weights for Alloy Wheels

The EN-Series lead clip-on wheel weight is used primarily on Audi, Mercedes Benz and early-model Japanese vehicles equipped with alloy wheels. Please refer to Application Guide (Part # 18082) and use rim gauge (RGP1) to verify specific applications.

Sizes: 10g – 60g

Passenger car & light truck



MAKE	MODEL	YEAR
Chrysler	Concord, LHS	1998-2004
	Town & Country	1998-2004
Dodge	Caravan	1998-2011
	Intrepid	1998-2004
	Neon	2000-2004
Ford	HD F150	2001-2003



MAKE	MODEL	YEAR
Audi	All	1980-1996
BMW	All	1980-2005
Cadillac	Catera	1997-2001
Jaguar	All	1988-2011
Kia	All	1994-2011
Nissan	All	1979-1989
Toyota	All	1980-1989
Volkswagen	All	1980-1996
Volvo	All	1980-2011



MAKE	MODEL	YEAR
Acura	All	1980-1996
Audi	All	1997-2011
Ford Truck	Explorer	2001-2004
	Ranger	
Honda	All	1980-1988
Mercedes Benz	All	1976-2011
Volkswagen	All	1980-1996



MAKE	MODEL	YEAR
Acura	All	1989-2011
Dodge	Colt	1993-1994
Honda	All	1989-2011
Infiniti	All	1990-2011
Lexus	All	1990-2011
Nissan	All	1990-2011
Toyota	All	1990-2011

FN-Series

Wheel Protectors®
Coated Wheel Weights for Alloy Wheels

The FN-Series lead clip-on wheel weight is used primarily on most Japanese vehicles equipped with alloy wheels that were manufactured prior to 1990. Please refer to Application Guide (Part # 18082) and use rim gauge (RGP1) to verify specific applications.

Sizes: 5g – 80g



MAKE	MODEL	YEAR
Cadillac	Escalade	2001
Chevrolet	All Full Size with Steel Wheels	1988-2011
	All Full Size with Alloy Wheels	1999-2011
Dodge	All Full Size with Steel Wheels	1993-2011
Ford	All	1980-2011
GMC	All Full Size with Steel Wheels	1988-2011
	All Full Size with Alloy Wheels	1999-2011
Lincoln	Navigator	1998-2002

TN-Series

Wheel Protectors®
Coated Wheel Weights for Alloy Wheels

The TN-Series lead clip-on wheel weight is used primarily on most domestic light-trucks equipped with decorative and larger-thickness steel wheels and most late-model light-trucks equipped with alloy wheels. Please refer to Application Guide (Part # 18082) and use rim gauge (RGP1) to verify specific applications.

Sizes: 0.25 oz. – 5 oz.



CLIP-ON

Medium & heavy duty truck



LT1Z-Series

Wheel Weights for Steel Wheels

The LT1Z-Series zinc clip-on wheel weight is used primarily on light-duty trucks, ¾ and 1-ton vehicles, with either tube or tubeless rims where such rims are too thick for standard passenger car weights. Also for use on heavier trucks with thin rim flanges. Please use rim gauge (RG2) to verify specific applications.

Sizes: 0.5 oz. – 6 oz.



I7Z-Series

Wheel Weights for Steel Wheels

The I7Z-Series zinc clip-on wheel weight is the most popular wheel weight for medium and heavy-duty trucks. It is used on the majority of trucks with tube-type tires. Please use rim gauge (RG2) to verify specific applications.

Sizes: 1 oz. – 6 oz.



TALZ-Series

Wheel Weights for Alloy Wheels

The TALZ-Series zinc clip-on wheel weight is for all Alcoa and Accuride aluminium, tubeless heavy-truck wheels manufactured since 1983. The wheel weight will fit both sides of the wheel. Please use rim gauge (RG2) to verify specific applications.

Sizes: 1 oz. – 6 oz.

Note: After extended service, certain tire designs used with Alcoa truck wheels cause the rim flange to wear. This flange wear causes fit problems with TAL-Series and TALU-Series lead clip-on wheel weights. Wheels should be inspected regularly for this wear. In severe wear cases, the rim should be removed from service. A rim-wear gauge is available from Alcoa to determine the severity of wear. Consult Alcoa for recommendations of service fitness.

LEAD Clip-on

Medium & heavy duty truck

RC-Series

Wheel Weights for Alloy Wheels

The RC-Series lead clip-on wheel weight is used on heavy-duty trucks with Firestone, Accuride, or Radical Commander rims. It can also be used with strip-steel rims with curved flanges, such as Budd, Firestone, Goodyear and Redco. Please use rim gauge (RG2) to verify specific applications.

Sizes: 2 oz. – 12 oz.



CT-Series

Wheel Weights for Alloy Wheels

The CT-Series clip-on wheel weight is used on heavy-duty trucks with Firestone, Accuride, Budd, or Goodyear tubeless rims with straight flanges. Primarily used on rim widths of 6.75", 7.50" and 8.25". Please use rim gauge (RG2) to verify specific applications.

Sizes: 2 oz. – 16 oz.



TAL-Series

Wheel Weights for Alloy Wheels

The TAL-Series lead clip-on wheel weight is for all Alcoa and Accuride aluminium, tubeless heavy-truck wheels manufactured since 1983. The wheel weight will fit both sides of the wheel. Also available in an uncoated finish (TALU-Series). Please use rim gauge (RG2) to verify specific applications.

Sizes: 2 oz. – 8 oz.



Note: After extended service, certain tire designs used with Alcoa truck wheels cause the rim flange to wear. This flange wear causes fit problems with TAL-Series and TALU-Series lead clip-on wheel weights. Wheels should be inspected regularly for this wear. In severe wear cases, the rim should be removed from service. A rim-wear gauge is available from Alcoa to determine the severity of wear. Consult Alcoa for recommendations of service fitness.



LT1-Series

Wheel Weights for Steel Wheels

The LT1-Series lead clip-on wheel weight is used primarily on light-duty trucks, ¾ and 1-ton vehicles, with either tube or tubeless rims where such rims are too thick for standard passenger car weights. Also for use on heavier trucks with thin rim flanges. Please use rim gauge (RG2) to verify specific applications.

Sizes: 0.5 oz. – 6 oz.



I7-Series

Wheel Weights for Steel Wheels

The I7-Series lead clip-on wheel weight is the most popular wheel weight for medium and heavy-duty trucks. It is used on the majority of trucks with tube-type tires. Please use rim gauge (RG2) to verify specific applications.

Sizes: 1 oz. – 16 oz.



I9-Series

Wheel Weights for Steel Wheels

The I9-Series lead clip-on wheel weight is a low-profile weight that is used on heavy-duty trucks where there may be interference with steering parts. Also for use on rims that are too thick for I7-Series weights. Please use rim gauge (RG2) to verify specific applications.

Sizes: 2 oz. – 12 oz.



ADHESIVE

Passenger car & motorcycle



NOTES	
Increment Weight	5 gram
Increment Width	3/4"
Size	60 gram
Pieces per Box	25
Available in	SSGo60N

SSG060N QuikStik®

Low Profile Adhesive Wheel Weights

The SSG060N QuikStik® steel adhesive wheel weight is a low profile adhesive weight made for use on most wheel types where a clip-on wheel weight is not available or not preferred, and where there is not enough brake caliper clearance for standard profile QuikStik® adhesive weights. All Perfect Equipment QuikStik® steel adhesive wheel weights feature the exclusive isosceles trapezoid segment design, allowing the weight to easily contour to the shape of the rim, and the patented QuikTab® (US Patent # 6,364,421), which makes separating the protective backing from the adhesive strip on the weight effortless. The protective backing is wider than the weight, allowing for an easier and quicker installation.



NOTES	
Increment Weight	0.25 oz. (7 grams)
Increment Width	1/2"
Size	3 oz.
Pieces per Box	52
Available in	200624ST

200624ST QuikStik®

Low Profile Adhesive Wheel Weights

The 200624ST QuikStik® lead adhesive wheel weight is a low profile adhesive weight made for use on most wheel types where a clip-on wheel weight is not available or not preferred, and where there is not enough brake caliper clearance for standard profile QuikStik® adhesive weights. All Perfect Equipment QuikStik® lead adhesive wheel weights are pre-cut and pre-taped. There is no cutting, no pre-contouring, and no waste! They also feature the patented QuikTab® (US Patent # 6,364,421), which makes separating the protective backing from the adhesive strip on the weight effortless. The protective backing is wider than the weight, allowing for an easier and quicker installation.



NOTES	
Increment Weight	0.25 oz. (7 grams)
Increment Width	3/4"
Size	3 oz.
Pieces per Box	25
Available in	SST300N

SST300N QuikStik®

Standard Profile Adhesive Wheel Weights

The SST300N QuikStik® steel adhesive wheel weight is a standard profile adhesive weight made for use on most wheel types where a clip-on wheel weight is not available or not preferred. All Perfect Equipment QuikStik® steel adhesive wheel weights feature the exclusive isosceles trapezoid segment design, allowing the weight to easily contour to the shape of the rim, and the patented QuikTab® (US Patent # 6,364,421), which makes separating the protective backing from the adhesive strip on the weight effortless. The protective backing is wider than the weight, allowing for an easier and quicker installation.

STEEL Adhesive

Passenger car & motorcycle

200624STR QuikStik® roll

Low Profile Adhesive Wheel Weights

The 200624STR QuikStik® steel adhesive wheel weight is a low profile adhesive weight roll, featuring 1,250 segments per box, made for use on most wheel types where a clip-on wheel weight is not available or not preferred, and where there is not enough brake caliper clearance for standard profile QuikStik® adhesive weights. All Perfect Equipment QuikStik® steel adhesive wheel weights feature the exclusive isosceles trapezoid segment design, allowing the weight to easily contour to the shape of the rim, and the patented QuikTab® (US Patent # 6,364,421), which makes separating the protective backing from the adhesive strip on the weight effortless. The protective backing is wider than the weight, allowing for an easier and quicker installation.



NOTES

Increment Weight	0.25 oz. (7 grams)
Increment Width	1/2"
Size	20 lbs
Pieces per Box	1,250
Available in	200624STR

SSG7500N QuikStik® roll

Low Profile Adhesive Wheel Weights

The SSG7500N QuikStik® steel adhesive wheel weight is a low profile adhesive weight roll, featuring 1,500 segments per box, made for use on most wheel types where a clip-on wheel weight is not available or not preferred, and where there is not enough brake caliper clearance for standard profile QuikStik® adhesive weights. All Perfect Equipment QuikStik® steel adhesive wheel weights feature the exclusive isosceles trapezoid segment design, allowing the weight to easily contour to the shape of the rim, and the patented QuikTab® (US Patent # 6,364,421), which makes separating the protective backing from the adhesive strip on the weight effortless. The protective backing is wider than the weight, allowing for an easier and quicker installation.



NOTES

Increment Weight	5 gram
Increment Width	3/4"
Size	16.5 lbs
Pieces per Box	1,500
Available in	SSG7500N

SST32000N QuikStik® roll

Standard Profile Adhesive Wheel Weights

The SST32000N QuikStik® steel adhesive wheel weight is a standard profile adhesive weight roll, featuring 1,280 segments per box, made for use on most wheel types where a clip-on wheel weight is not available or not preferred. All Perfect Equipment QuikStik® steel adhesive wheel weights feature the exclusive isosceles trapezoid segment design, allowing the weight to easily contour to the shape of the rim, and the patented QuikTab® (US Patent # 6,364,421), which makes separating the protective backing from the adhesive strip on the weight effortless. The protective backing is wider than the weight, allowing for an easier and quicker installation.



NOTES

Increment Weight	0.25 oz. (7 gram)
Increment Width	3/4"
Size	20 lbs
Pieces per Box	1,280
Available in	SST32000N



NOTES	
Increment Weight	0.25 oz. (7 gram)
Increment Width	1/2"
Size	3 oz.
Pieces per Box	30
Available in	100360 (Uncoated) 100360C (Chrome) 100360S (Silver) 100360B (Black)



NOTES	
Increment Weight	0.25 oz. (7 gram)
Increment Width	1/2"
Size	3 oz.
Pieces per Box	60
Available in	100720 (Uncoated)



NOTES	
Increment Weight	0.25 oz. (7 gram)
Increment Width	3/4"
Size	3 oz.
Pieces per Box	52 or 48
Available in	200624 (Uncoated/52) 200624S (Uncoated/48)

100360 QuikStik®

Standard Profile Adhesive Wheel Weights

The 100360 QuikStik® lead adhesive wheel weight is a standard profile adhesive weight made for use on most wheel types where a clip-on wheel weight is not available or not preferred. All Perfect Equipment QuikStik® lead adhesive wheel weights are pre-cut and pre-taped. There is no cutting, no pre-contouring, and no waste! They also feature the patented QuikTab® (US Patent # 6,364,421), which makes separating the protective backing from the adhesive strip on the weight effortless. The protective backing is wider than the weight, allowing for an easier and quicker installation.

100720 QuikStik®

Standard Profile Adhesive Wheel Weights

The 100720 QuikStik® lead adhesive wheel weight is the exact same as the 100360, except for box quantity. All Perfect Equipment QuikStik® lead adhesive wheel weights are pre-cut and pre-taped. There is no cutting, no pre-contouring, and no waste! They also feature the patented QuikTab® (US Patent # 6,364,421), which makes separating the protective backing from the adhesive strip on the weight effortless. The protective backing is wider than the weight, allowing for an easier and quicker installation.

200624 QuikStik®

Low Profile Adhesive Wheel Weights

The 200624 QuikStik® lead adhesive wheel weight is a low profile adhesive weight made for use on most wheel types where a clip-on wheel weight is not available or not preferred, and where there is not enough brake caliper clearance for standard profile QuikStik® adhesive weights. All Perfect Equipment QuikStik® lead adhesive wheel weights are pre-cut and pre-taped. There is no cutting, no pre-contouring, and no waste! They also feature the patented QuikTab® (US Patent # 6,364,421), which makes separating the protective backing from the adhesive strip on the weight effortless. The protective backing is wider than the weight, allowing for an easier and quicker installation.



ADHESIVE

Medium & heavy duty truck



NOTES	
Increment Weight	0.25 oz. (7 grams)
Increment Width	1"
Size	6 oz.
Pieces per Box	30
Available in	SSM600N

SSM600N QuikStik®

Standard Profile Adhesive Wheel Weights

The SSM600N QuikStik® steel adhesive wheel weight is a standard profile adhesive weight made for use on most truck and RV wheel types where a clip-on wheel weight is not available or not preferred. All Perfect Equipment QuikStik® steel adhesive wheel weights feature the exclusive isosceles trapezoid segment design, allowing the weight to easily contour to the shape of the rim, and the patented QuikTab® (US Patent # 6,364,421), which makes separating the protective backing from the adhesive strip on the weight effortless. The protective backing is wider than the weight, allowing for an easier and quicker installation.



NOTES	
Increment Weight	0.5 oz. (14 grams)
Increment Width	1"
Size	6 oz.
Pieces per Box	30
Available in	300360ST

300360ST QuikStik®

Standard Profile

The 300360ST QuikStik® steel adhesive wheel weight is a standard profile adhesive weight made for use on most truck and RV wheel types where a clip-on wheel weight is not available or not preferred. All Perfect Equipment QuikStik® steel adhesive wheel weights feature the exclusive isosceles trapezoid segment design, allowing the weight to easily contour to the shape of the rim, and the patented QuikTab® (US Patent # 6,364,421), which makes separating the protective backing from the adhesive strip on the weight effortless. The protective backing is wider than the weight, allowing for an easier and quicker installation.

LEAD Adhesive

Medium & heavy duty truck

300360 QuikStik®

Standard Profile Adhesive Wheel Weights

The 300360 QuikStik® lead adhesive wheel weight is a larger style, standard profile adhesive weight made for use on most truck and RV wheel types where a clip-on wheel weight is not available or not preferred. All Perfect Equipment QuikStik® lead adhesive wheel weights are pre-cut and pre-taped. There is no cutting, no pre-contouring, and no waste! They also feature the patented QuikTab® (US Patent # 6,364,421), which makes separating the protective backing from the adhesive strip on the weight effortless. The protective backing is wider than the weight, allowing for an easier and quicker installation.



NOTES	
Increment Weight	0.5 oz. (14 gram)
Increment Width	¾"
Size	6 oz.
Pieces per Box	30
Available in	300360 (Uncoated)

CL6 QuikStik®

Standard Profile Adhesive Wheel Weights

The CL6 QuikStik® lead adhesive wheel weight is a larger style, standard profile adhesive weight made for use on most truck and RV wheel types where a clip-on wheel weight is not available or not preferred. All Perfect Equipment QuikStik® lead adhesive wheel weights are pre-cut and pre-taped. There is no cutting, no pre-contouring, and no waste! They also feature the patented QuikTab® (US Patent # 6,364,421), which makes separating the protective backing from the adhesive strip on the weight effortless. The protective backing is wider than the weight, allowing for an easier and quicker installation.



NOTES	
Increment Weight	1 oz. (28 gram)
Increment Width	¾"
Size	6 oz.
Pieces per Box	30
Available in	CL6 (Uncoated)



NOTES	
Increment Weight	2 oz. (56 gram)
Increment Width	1-1/4"
Size	12 oz.
Pieces per Box	8
Available in	CL12 (Uncoated)

CL12 QuikStik®

Standard Profile Adhesive Wheel Weights

The CL12 QuikStik® lead adhesive wheel weight is a larger style, standard profile adhesive weight made for use on most truck and RV wheel types where a clip-on wheel weight is not available or not preferred. All Perfect Equipment QuikStik® lead adhesive wheel weights are pre-cut and pre-taped. There is no cutting, no pre-contouring, and no waste! They also feature the patented QuikTab® (US Patent # 6,364,421), which makes separating the protective backing from the adhesive strip on the weight effortless. The protective backing is wider than the weight, allowing for an easier and quicker installation.

Adhesive weight installation instructions



1. Pre-treating the rim

Apply a suitable cleaning agent on the area where weight is to be applied. Wipe area clean and dry. Please note: Be sure to test the cleaning agent on a small area to ensure it will not damage the wheel's finish.



2. Select the correct adhesive weight size

Cut the adhesive weights or break them apart, depending on weight type, to obtain the correct amount of weight needed.



3. Applying the weights

Remove the tape backing and press the center of the weight exactly at the imbalance point. Please note: Do not touch the tape surface after peeling off the tape backing.



4. Securing the weight

Once the center of the weight is located at the imbalance point, press down on the full weight length working from the center to the left and right. Using firm hand pressure should be enough to secure the weight.



ASSORTMENTS



PART NO.	DESCRIPTION
CWW075Z	Weight Stand with Zinc Weights
18150Z	Zinc Eight-Series Header Card
75K	Alloy Wheel Weight Hammer
18027	OE Alloy Wheel Weight Application Wall Chart
18082NL	OE Alloy Wheel Weight Application Guide
18104	Wheel Protectors Counter Card
RGP1	Two (2) Passenger Car Rim Gauges

CWW075Z

Passenger Car Master Assortments

The CWW075Z zinc wheel weight master assortment is a comprehensive weight kit that includes all seven standard weight types needed for today's passenger car market. Comes complete with a floor-standing rack with ample storage space for the Perfect Equipment invented, color-coded bins to make weight identification quick and easy. Additional installation tools and educational information is also included. Actual kit may vary from inclusion list and photo shown.

Total Pieces: 2,325
36"W x 14.5"D x 67"H



PART NO.	DESCRIPTION
CWW150Z	Weight Stand with Zinc Weights
18150Z	Zinc Eight-Series Header Card
75K	Alloy Wheel Weight Hammer
18027	OE Alloy Wheel Weight Application Wall Chart
18082NL	OE Alloy Wheel Weight Application Guide
18104	Wheel Protectors Counter Card
RGP1	Two (2) Passenger Car Rim Gauges

CWW150Z

Passenger Car Tabletop Master Assortment

The CWW150Z zinc wheel weight, tabletop master assortment is a comprehensive weight kit that includes all seven standard weight types needed for today's passenger car market. This kit serves as a practical starter kit for most installers. Comes complete with a tabletop rack with ample storage space for the Perfect Equipment invented, color-coded bins to make weight identification quick and easy. Additional installation tools and educational information is also included. Actual kit may vary from inclusion list and photo shown.

Total Pieces: 732
35.75"W x 8.25"D x 39"H

STEEL Assortments

CWW075ST

Non lead Master Assortment

The CWW075ST steel wheel weight master assortment is a comprehensive weight kit that includes all seven standard weight types needed for today's passenger car market. Comes complete with a floor-standing rack with ample storage space for the Perfect Equipment invented, color-coded bins to make weight identification quick and easy. Additional installation tools and educational information is also included. Actual kit may vary from inclusion list and photo shown.

Total Pieces: 2,325
36"W x 14.5"D x 67"H



PART NO.	DESCRIPTION
CWW075S	Weight Stand with Steel Weights
18150ST	Steel Eight-Series Header Card
75K	Alloy Wheel Weight Hammer
18027	OE Alloy Wheel Weight Application Wall Chart
18082NL	OE Alloy Wheel Weight Application Guide
18104	Wheel Protectors Counter Card
RGP1	Two (2) Passenger Car Rim Gauges

CWW150ST

Passenger Car Tabletop Master Assortment

The CWW150ST steel wheel weight, tabletop master assortment is a comprehensive weight kit that includes all seven standard weight types needed for today's passenger car market. This kit serves as a practical starter kit for most installers. Comes complete with a tabletop rack with ample storage space for the Perfect Equipment invented, color-coded bins to make weight identification quick and easy. Additional installation tools and educational information is also included. Actual kit may vary from inclusion list and photo shown.

Total Pieces: 836
35.75"W x 8.25"D x 39"H



PART NO.	DESCRIPTION
CWW150ST	Weight Stand with Steel Weights
18150ST	Steel Eight-Series Header Card
75K	Alloy Wheel Weight Hammer
18082NL	OE Alloy Wheel Weight Application Guide
18104	Wheel Protectors Counter Card
RGP1	Two (2) Passenger Car Rim Gauges



PART NO.	DESCRIPTION
CWW060	Weight Stand with Lead Weights
RG12	Truck Rim Gauge
TR-10	Truck Wheel Weight Removal Tool
95K	Alloy Wheel Weight Hammer
18026	Heavy-Duty Wheel Weight Product Catalog

CWW060

Heavy-Duty Truck Tabletop Assortment

The CWW060 lead wheel weight, tabletop assortment is a comprehensive heavy-duty truck wheel weight kit. This kit will provide ample coverage for most medium and heavy-duty trucks and RVs on the road today. Comes complete with a tabletop rack with ample storage space for the Perfect Equipment invented, color-coded bins to make weight identification quick and easy. Additional installation tools and educational information is also included. Actual kit may vary from inclusion list and photo shown.

Total Pieces: 300
28.5"W x 14"D x 22"H



PART NO.	DESCRIPTION
CWW074	Weight Stand with Lead Weights
CWW075	Weight Stand with Lead Weights
18150	Lead Eight-Series Header Card
75K	Alloy Wheel Weight Hammer
18082	Truck Wheel Weight Removal Tool
18104	Wheel Protectors Counter Card
RGP1	Passenger Car Rim Gauge

CWW74 & CWW075

Passenger Car Master Assortments

The CWW074 & CWW075 lead wheel weight master assortments are comprehensive weight kits that include all seven standard weight types needed for today's passenger car market. Both come complete with a floor-standing rack with ample storage space for the Perfect Equipment invented, color-coded bins to make weight identification quick and easy. Additional installation tools and educational information are also included. Actual kits may vary from inclusion list and photo shown.

Total Pieces: 2,000 (CWW074), 2,625 (CWW075)
36"W x 14.5"D x 67"H



PART NO.	DESCRIPTION
CWW150	Weight Stand with Lead Weights
18099	Lead Eight-Series Header Card
75K	Alloy Wheel Weight Hammer
18082	OE Alloy Weight Application Guard
18104	Wheel Protectors Counter Card
RGP1	Passenger Car Rim Gauge

CWW150

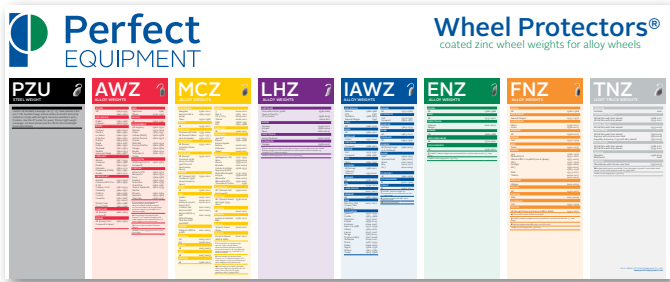
Passenger Car Tabletop Master Assortment

The CWW150 lead wheel weight, tabletop master assortment is a comprehensive weight kit that includes all seven standard weight types needed for today's passenger car market. This kit serves as a practical starter kit for most installers. Comes complete with a tabletop rack with ample storage space for the Perfect Equipment invented, color-coded bins to make weight identification quick and easy. Additional installation tools and educational information is also included. Actual kit may vary from inclusion list and photo shown.

Total Pieces: 1,026
35.75"W x 18.25"D x 39"H



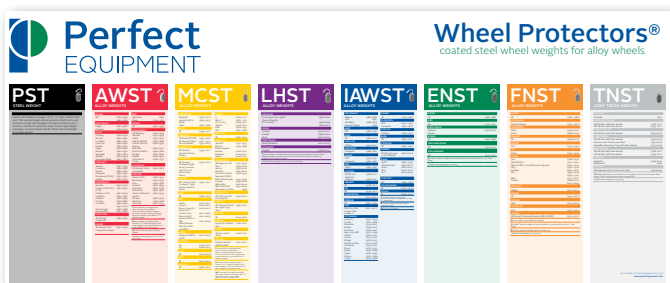
TOOLS & ACCESSORIES



PART 18150Z

Assortment Header Card

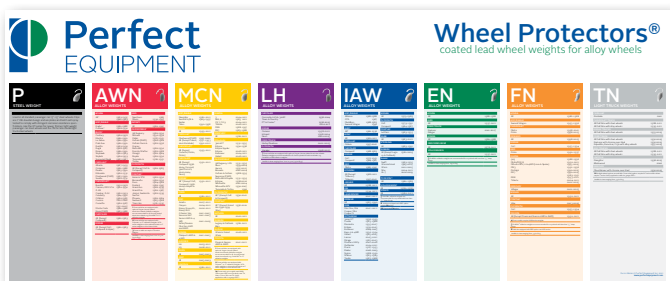
Standard eight series, zinc-based wheel weight replacement header card for Assortment CWW150Z & CWW075Z.



PART 18150ST

Assortment Header Card

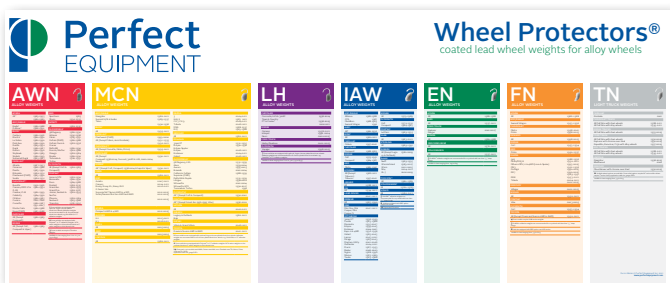
Standard eight series, steel-based wheel weight replacement header card for Assortment CWW150ST & CWW075ST.



PART 18150

Assortment Header Card

Standard eight series, lead-based wheel weight replacement header card for Assortment CWW074 & CWW075.



PART 18099

Assortment Header Card

Only seven series (minus P-Series), lead-based wheel weight replacement header card for Assortment CWW150.

Accessories

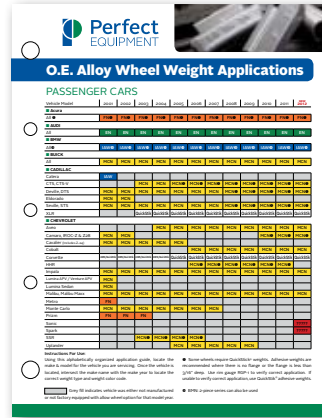
PART 18027

Alloy Wheel Weight Wall Chart



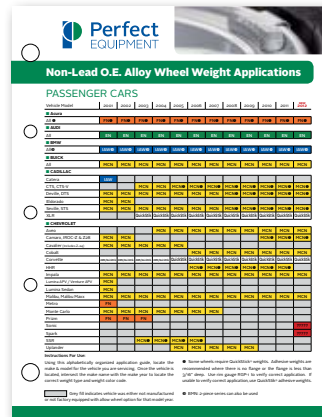
PART 18082

Alloy Wheel Weight Application Guide



PART 18082NL

Non-Lead Wheel Weight Application Guide



QS2000 & QS3000 QuikStik® ROLL STANDS

For QuikStik® Roll Adhesive Wheel Weights

These rugged floor stands are made to hold our various QuikStik® adhesive wheel weight rolls. Made of steel, these stands can withstand nearly any environment. The base is wide enough to prevent easy tipping, and the head places the wheel weight box(es) at the perfect angle for a quick and easy segment removal. The QS2000 is made to hold one roll, and the QS3000 is made to hold two rolls.



PART NO.	DESCRIPTION
QS2000	Holds One Roll
QS3000	Holds Two Rolls



25K

Lead Clip-On Installation & Removal Tool

This light-duty wheel weight installation and removal tool is the industry standard for uncoated lead clip-on style wheel weights. Plastic-coated handles provide a better grip.



50K & 50KE

Lead Clip-On Installation & Removal Tool

This European designed clip-on wheel weight installation & removal tool features a “Clip Claw” crowbar, punch designed handles, and a heavier hammer head. Made from forged vanadium steel for exceptional durability. The 50KE is an economical version of the 50K, where forged strength and durability aren’t critical issues.



71K

Lead Clip-On Installation & Removal Tool

Known as “The Protector,” this wheel weight installation and removal tool is to be used on coated clip-on wheel weights. This tool comes with a unique replaceable “soft head” design that facilitates the installation and removal of coated wheel weights without damaging the wheel or the special wheel weight coating.



PT7

Lead Clip-On Installation & Removal Tool

Primarily used for the large truck steel clip-on wheel weights. Designed by mechanics for mechanics. The “Clip Claw” design is ideal for removing weights that have minimum tire/wheel flange clearance. Extra-heavy hammer weight simplifies the installation of large weights. Plastic-coated handles provide a better grip and a comfortable feel.

Accessories

75K

Non-Lead Clip-On Truck Wheel Weight Installation Tool

Used for the installation of coated clip-on wheel weights. This hammer features a unique “Soft Head” acetate hammer face. The wooden handle has a natural lacquer finish. The casted steel head has an enamel finish, and the rear mounted hardened steel “clip claw” horn quickly removes old weights. The horns are replaceable (Part No. 75H).



95K

Non-Lead Clip-On Truck Wheel Weight Installation Tool

Specifically designed to install TAL clip-on wheel weights. The extra-heavy hammer weight provides the additional striking force needed to install TAL wheel weights. The small diameter, soft-tip hammer face allows for concentration of the force precisely on the clip. The dual-head increases longevity and efficiency.



105K

Non-Lead Clip-On Installation & Removal Tool

The 105k is the preferred non-lead clip-on installation and removal tool. This hammer features a soft acetate hammer face. The casted steel head has an enamel finish, and the rear mounted hardened steel “clip claw” horn quickly removes old weights. The horns are replaceable (Part # 75H).





TR10

Truck Wheel Weight Removal Tool

This heavy-duty, hardened-steel removal tool even makes taking off the toughest weights easy.



QSS1

Adhesive Wheel Weight Removal Tool

This adhesive wheel weight removal tool is the industry standard.



RG1

Passenger Car & Light Truck Rim Gauge



RG2

Medium & Heavy Duty Truck Rim Gauge

Perfect Equipment Inc.

1715 Joe B. Jackson Parkway | Murfreesboro, TN 37127
800-251-1566 | 615-893-0643 | Fax 615-898-1668

Form 18000 © Perfect Equipment Inc. 2011
www.perfectequipment.com